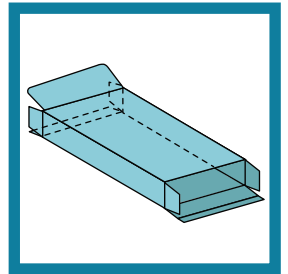


Vcentosei C

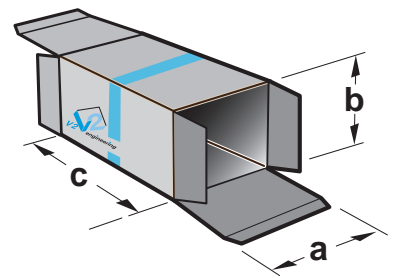
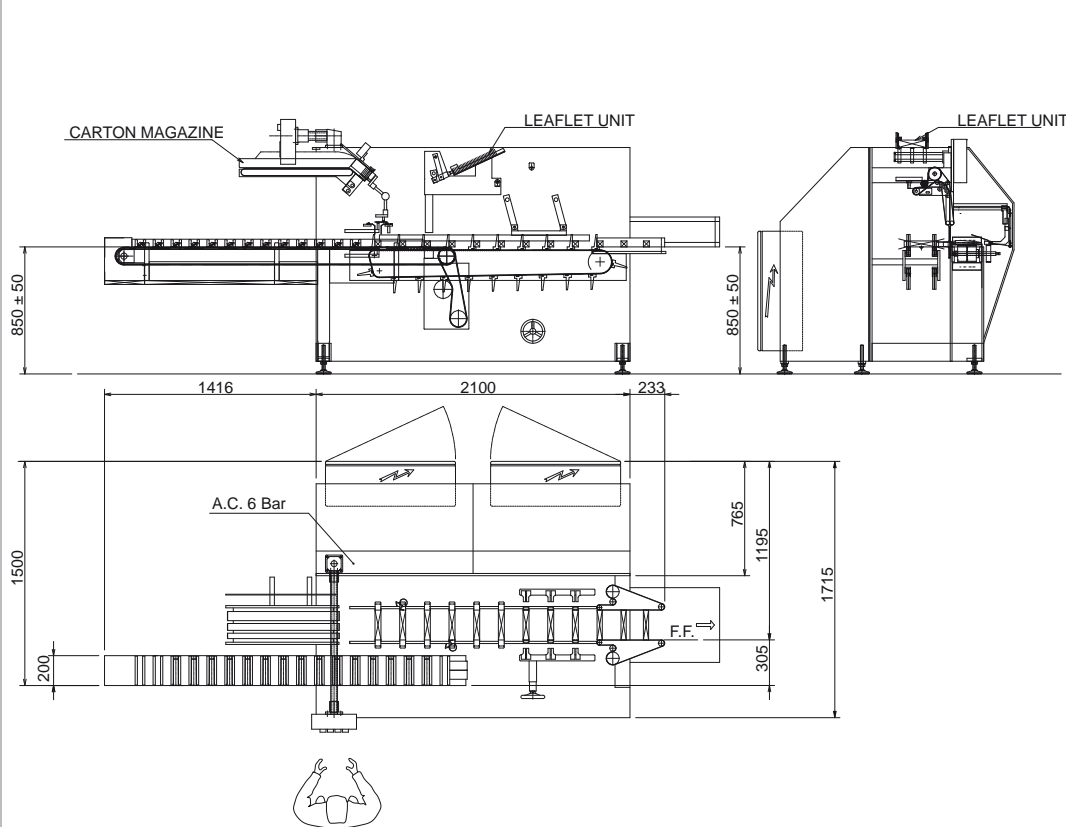


- *HORIZONTAL CARTONER* - ASTUCCIATRICE ORIZZONTALE
- *HORIZ. KARTONIERMASCHINE* - *ETUYEUSE HORIZONTALE*



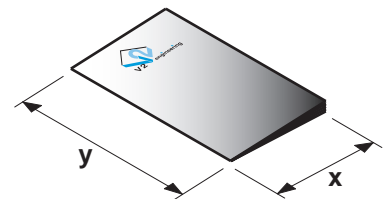
- *Operator's friendly ergonomics* – Ergonomia operatore
- *Positive carton opening* – Apertura astuccio positiva
- *Very compact footprint* – Struttura compatta
- *Flexibility for customization* – Flessibilità di personalizzazioni
- *PLC Control with touchscreen* – Interfaccia operatore con PLC / touchscreen

V2 *engineering*
Packaging machinery



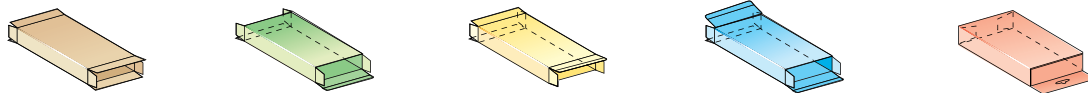
Size range		
(mm)	Min.	Max.
a	30	140
b	15	80
c	90-80*	200

* machine in special version
per macchine in versione speciale
im erweiterten Ausführung
pour machine en version spéciale



Leaflet		
(mm)	Min.	Max.
x	20	50
y	100	180

□ Types of preglued cartons useable / Tipo di astucci preincollati utilizzabili / Eingesetzte vorgeklebte Schachtelarten / Types d'étuis pré-encollés pouvant être utilisés



- Technical improvements can involve modifications to Lay-out.
- Eventuali migliorie tecniche possono modificare le dimensioni dello schema e delle caratteristiche.
- Die Maßangaben im Schema können infolge von technischen Verbesserungen ändern.
- Les dimensions du schéma peuvent subir des variations à la suite d'éventuelles améliorations techniques.

TECHNICAL DATA

- **Production capacity:**
Max 80 cycles /minute (relating to product)
- **Installed power:**
2 Kw with tuck-in ends closing
6 Kw with Hot-melt glue ends closing
- **Air consumption:**
Max 1 NL/cycle
- **Changeover size time:**
For a standard machine, changeover time is 10 minutes
- **Electrical cabinet:**
At european standard, driven by (PLC)

DATI TECNICI

- **Produzione:**
Fino a 80 cicli /minuto (in base alla tipologia del prodotto)
- **Potenza assorbita:**
2 Kw con chiusura ad incastro
6 Kw con chiusura a colla Hot-melt
- **Consumo aria:**
Massimo 1 NL/ciclo
- **Tempo di cambio formato:**
10 minuti per macchina in versione standard
- **Impianto elettrico:**
A norme europee con logica programmabile (PLC)

TECHNISCHE DATEN

- **Leistung:**
Bis 80 Stck/Minute in Abhängigkeit zur Produktausführung
- **Stromaufnahme:**
2 Kw bei Klipsverschluss
6 Kw bei "Hot melt" Verschluss
- **Luftdruckverbrauch:**
Max 1 NL/Zyklus
- **Formatwechsel:**
Standardmaschine ca. 10 Minuten
- **Elektrische Schaltung:**
Nach europäischen Normen mit programmierbarer Logik (PLC)

CARACTERISTIQUES TECHNIQUES

- **Cadence:**
Jusqu'à 80 Cpm (selon la version et les produits)
- **Puissance absorbée:**
2 Kw version pattes rentrantes
6 Kw version pattes collées
- **Consommation d'air comprimé:**
Max 1 NL/cycle
- **Temps de changement de format:**
10 minutes en version standard
- **Installation électrique:**
Conforme à la législation européenne pilotée par un automate programmable

The manufacturer reserves himself the right to change a.m.Data without prior notice.

I dati tecnici sono indicativi e possono essere modificati dal costruttore senza preavviso.

Der Hersteller behält sich das Recht vor, o.e. Daten ohne Voranzeige zu ändern.

Ces données sont indicatives et peuvent être modifiées par le constructeur sans préavis.

V2 engineering s.r.l.

Via Masetti, 13 - 40069 - Zola Predosa (BO) Italy
T.051.6166156 - F.051.6166190
mail: info@v2engineering.com

www.v2engineering.com